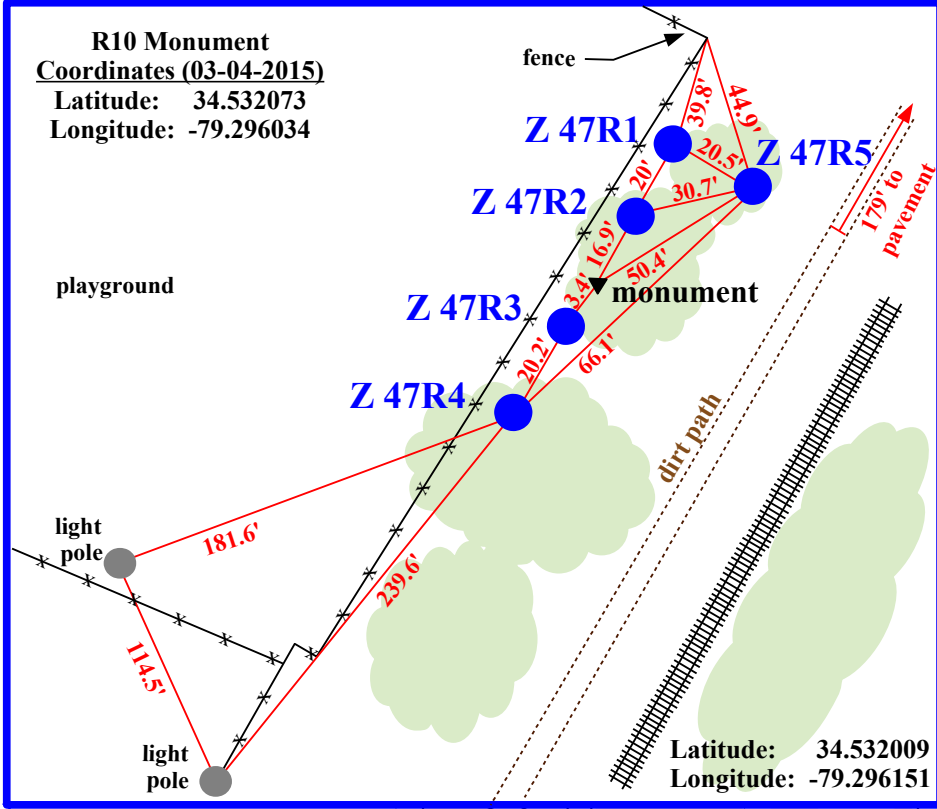


R10 Monument
 Coordinates (03-04-2015)
 Latitude: 34.532073
 Longitude: -79.296034



Latitude: 34.532009
 Longitude: -79.296151

Site Map
 North Carolina
 Monitoring Well Network
 Rowland Site, Z 47R
 Rowland, Robeson County, NC

NOTE: This map is for informational purposes only. It does not authorize any party to enter onto any lands depicted herein.



Southside Ashpole Elementary School

Rowland Monitoring Station (5 wells)

Rowland Manor Apartments

500 ft